





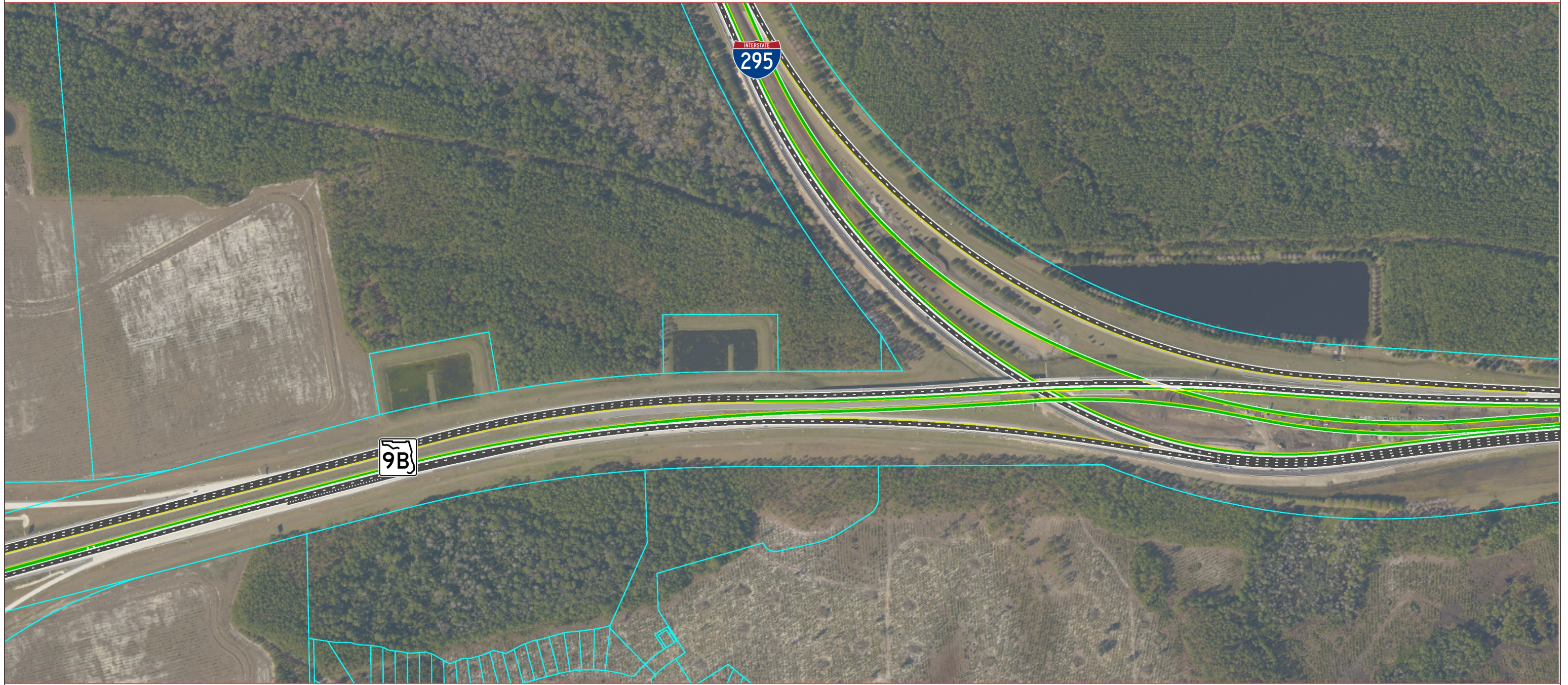




From SR 9B to J. Turner Boulevard (SR 202)  
Duval County, Florida  
FM #: 209301-3







**LEGEND**

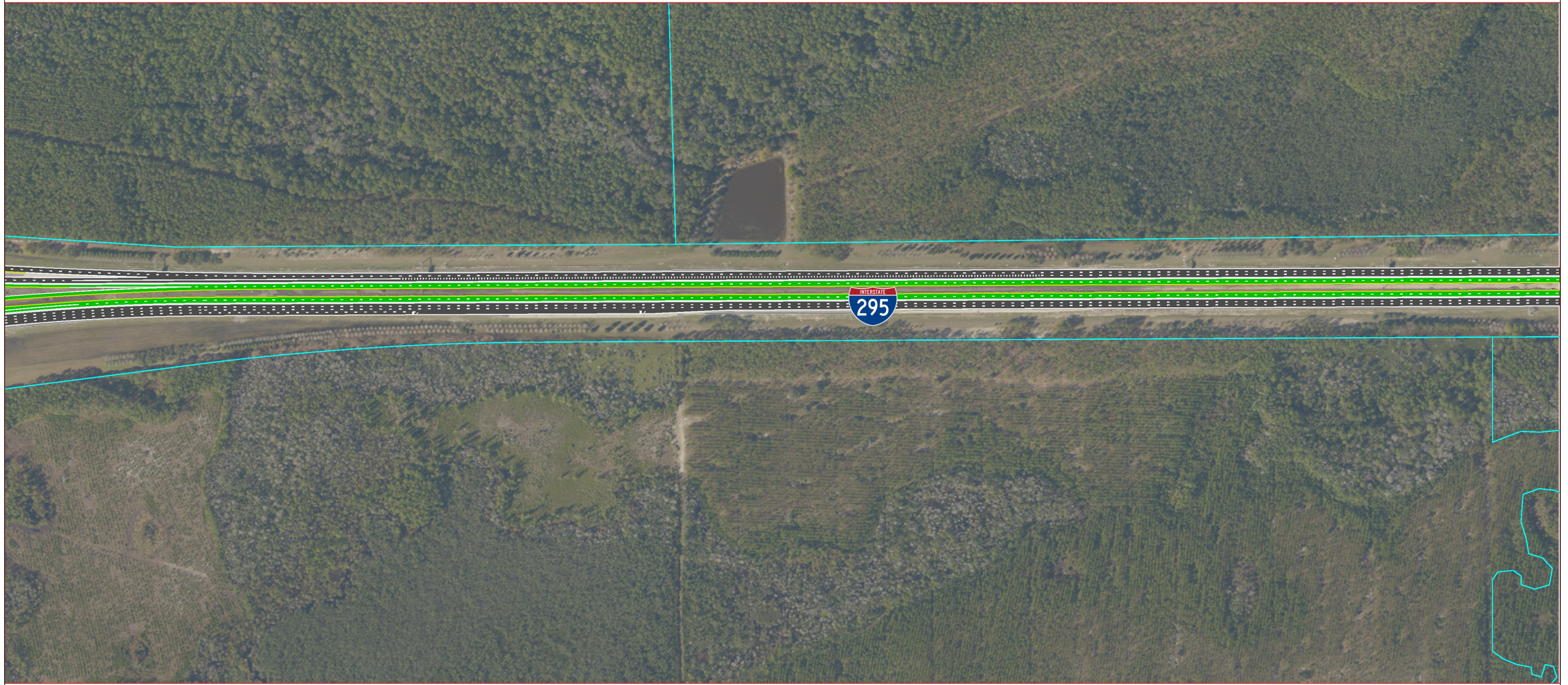
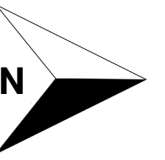
- |   |                   |   |   |
|---|-------------------|---|---|
|  | General Use Lanes |  | Parcel Lines                                  |
|  | Express Lanes     |  | Constructed/Under Construction Noise Barriers |
|  | Bridges           |  | New Proposed Noise Barriers                   |



From SR 9B to J. Turner Boulevard (SR 202)  
Duval County, Florida  
FM #: 209301-3







**LEGEND**

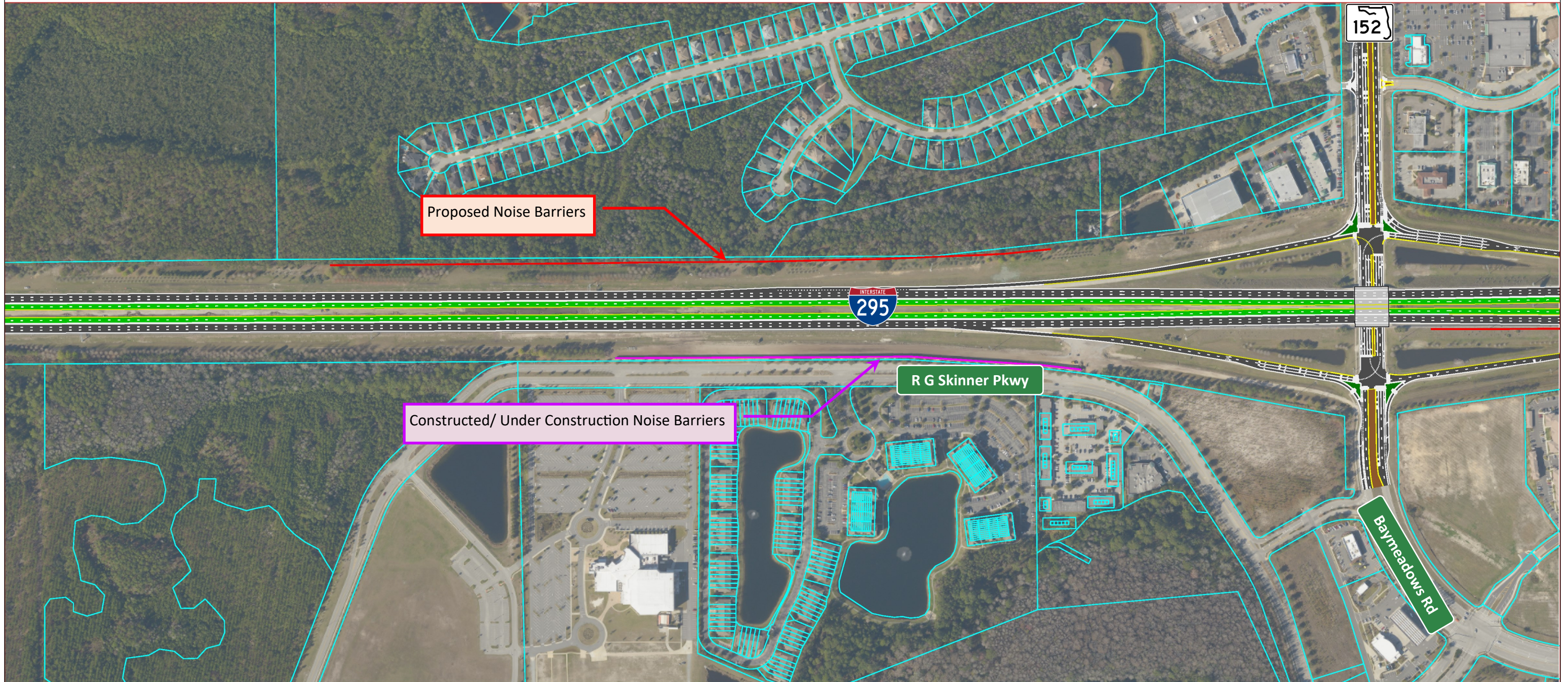
- |   |                   |   |   |
|---|-------------------|---|---|
|  | General Use Lanes |  | Parcel Lines                                  |
|  | Express Lanes     |  | Constructed/Under Construction Noise Barriers |
|  | Bridges           |  | New Proposed Noise Barriers                   |



From SR 9B to J. Turner Boulevard (SR 202)  
Duval County, Florida  
FM #: 209301-3







**LEGEND**

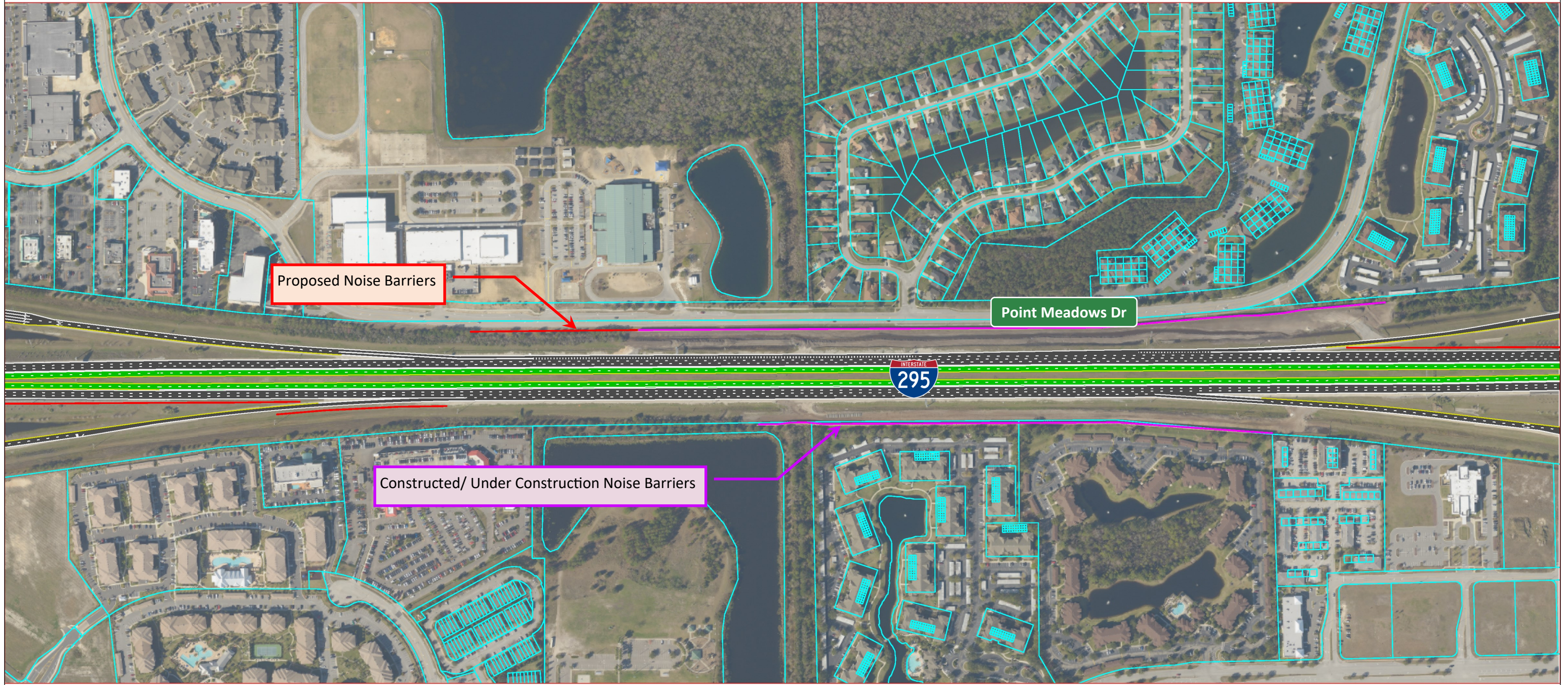
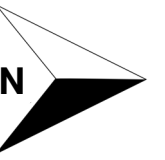
- |   |                   |   |   |
|---|-------------------|---|---|
|  | General Use Lanes |  | Parcel Lines                                  |
|  | Express Lanes     |  | Constructed/Under Construction Noise Barriers |
|  | Bridges           |  | New Proposed Noise Barriers                   |



From SR 9B to J. Turner Boulevard (SR 202)  
Duval County, Florida  
FM #: 209301-3




**LEGEND**

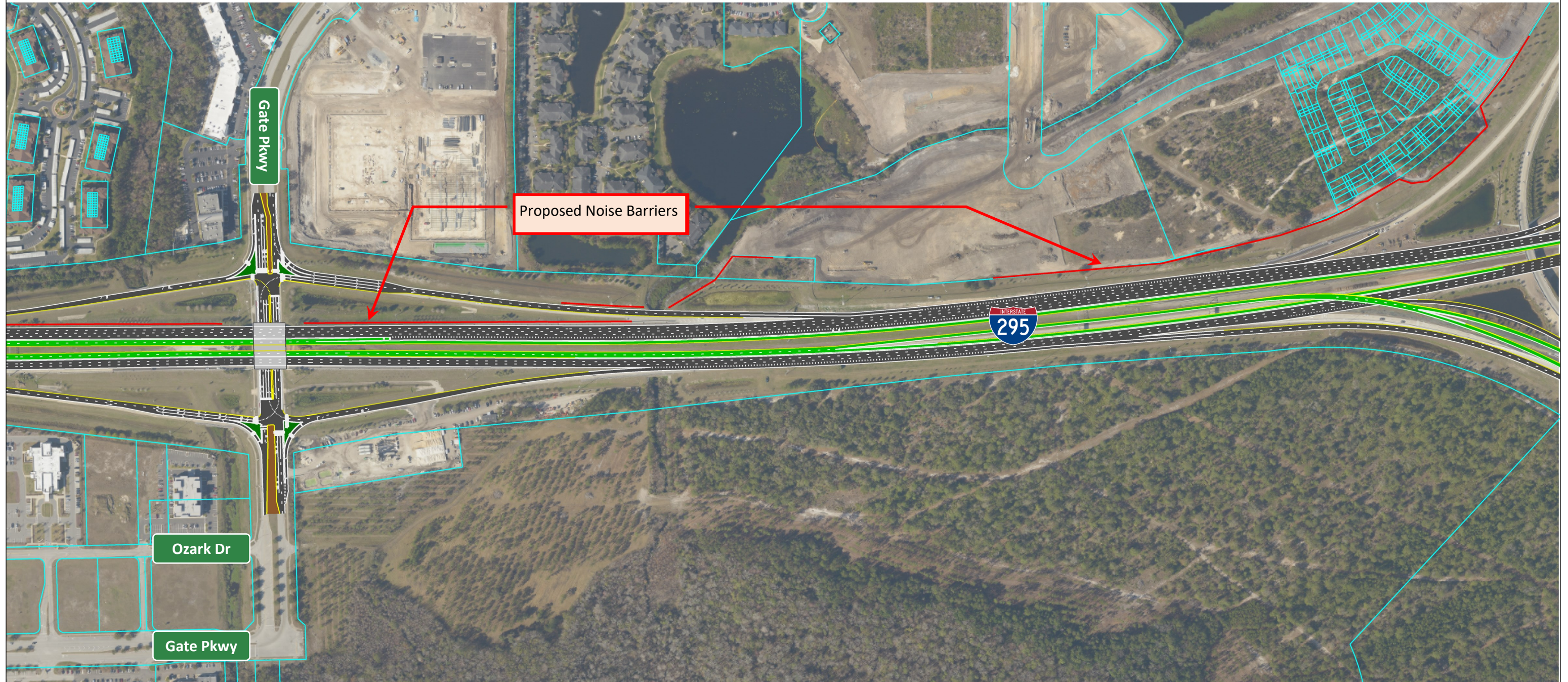
- |   |                   |   |   |
|---|-------------------|---|---|
|  | General Use Lanes |  | Parcel Lines                                  |
|  | Express Lanes     |  | Constructed/Under Construction Noise Barriers |
|  | Bridges           |  | New Proposed Noise Barriers                   |



From SR 9B to J. Turner Boulevard (SR 202)  
Duval County, Florida  
FM #: 209301-3







**LEGEND**

- |   |                   |   |   |
|---|-------------------|---|---|
|  | General Use Lanes |  | Parcel Lines                                  |
|  | Express Lanes     |  | Constructed/Under Construction Noise Barriers |
|  | Bridges           |  | New Proposed Noise Barriers                   |



From SR 9B to J. Turner Boulevard (SR 202)  
Duval County, Florida  
FM #: 209301-3




**LEGEND**

- |   |                   |   |   |
|---|-------------------|---|---|
|  | General Use Lanes |  | Parcel Lines                                  |
|  | Express Lanes     |  | Constructed/Under Construction Noise Barriers |
|  | Bridges           |  | New Proposed Noise Barriers                   |



From SR 9B to J. Turner Boulevard (SR 202)  
Duval County, Florida  
FM #: 209301-3

**LEGEND**

- |   |                   |   |   |
|---|-------------------|---|---|
|  | General Use Lanes |  | Parcel Lines                                  |
|  | Express Lanes     |  | Constructed/Under Construction Noise Barriers |
|  | Bridges           |  | New Proposed Noise Barriers                   |